



Paint Mines Trail



The **Paint Mines Trail** is located in the Paint Mines Interpretative Park near Calhan. The following inscription greets trail users at the trailhead “Relentless prairie winds, sandstone-capped spires and hoodoos, colorful hues of clay and distant coyote calls beckon visitors to this serene landscape. As you hike from the trailhead into the distant reaches, the park offers a journey through time, past fascinating geological formations and remnants of human history, in a unique geological area.”

[Click here](#)
to view photos of this trail
(Password = havefun)

| | |
|---------------------------------|--|
| Use of Trail: | Hiking Only |
| Length of Trail: | 3.47 Miles Loop Trail |
| Elevation Gain: | 6,658 Ft. to 6,659 Ft. / 1 Ft Gain (Loop) 208 Ft. Gain at Highest Point of Loop |
| Hiking Difficulty: | Easy (see ratings here) |
| Fees / Permits: | None |
| Trail Contact: | El Paso County Parks Department, 2002 Creek Crossing, Colorado Springs, CO. 80906 (719)520-6375 |
| Approx. Hiking Time: | 1.5 to 2 Hours Roundtrip (Loop Trail) |
| Terrain Type: | Plains / Hilly |
| Trail Characteristics: | Gravel / Dirt |
| Views: | Paint Mines Formations / Plains |
| Pets: | None Permitted |
| Other Nearby Trails: | None |
| Geocaches / Letterboxes: | None |

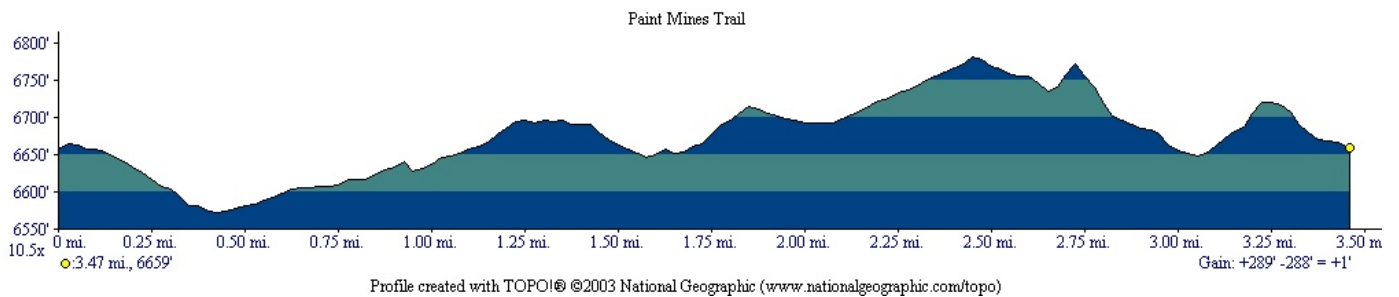
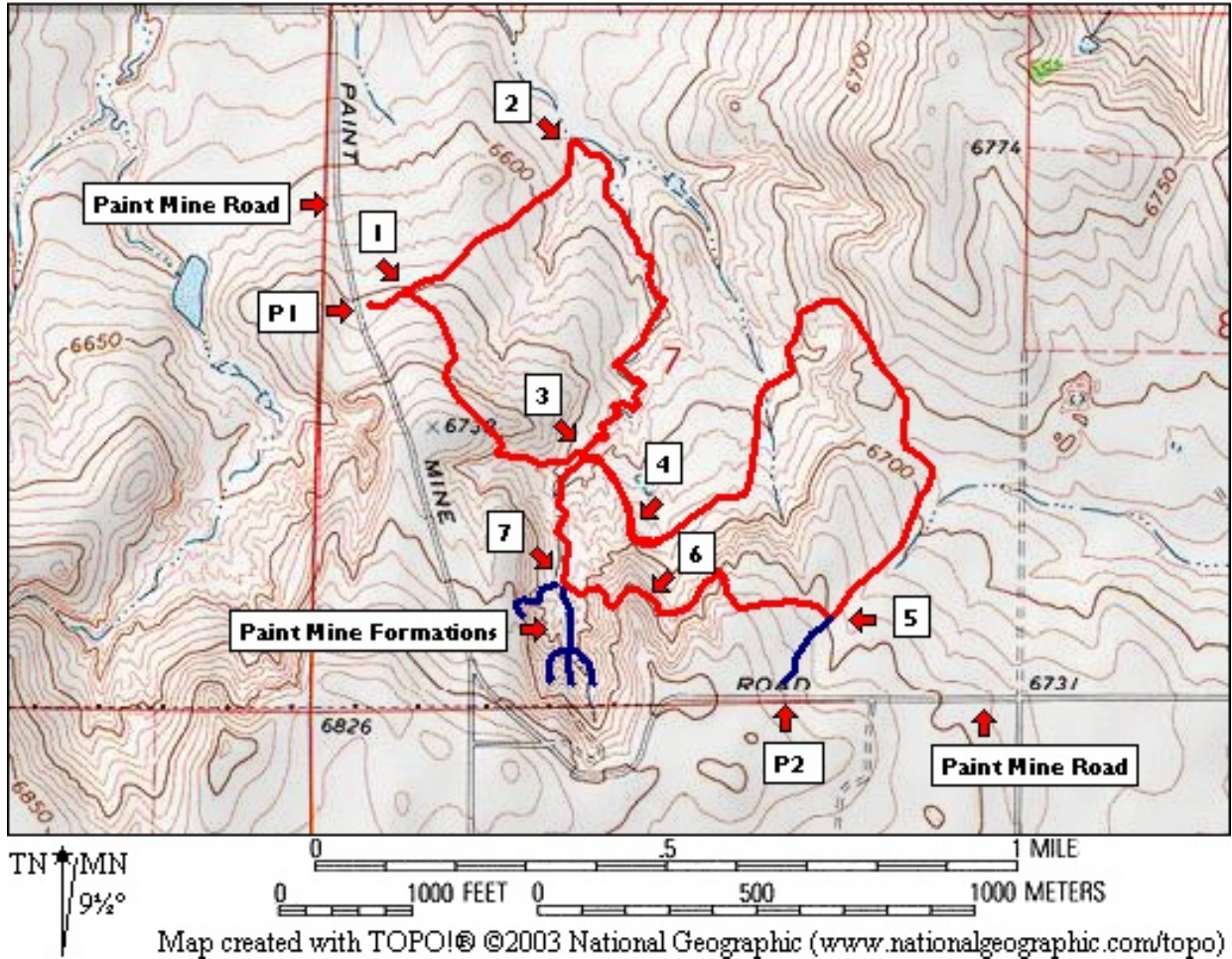
GPS Waypoint Files are also available for this trail. This file includes the GPS waypoints for each trail feature listed and can be accessed and downloaded directly to your GPS unit.

[Click here for the instructions on how to download the GPS waypoint file.](#)

[Click here to download the GPS waypoint file for this trail.](#)

Black Forest / Eastern Plains Trail Series
 Paint Mines Trail

Paint Mines Trail



Black Forest / Eastern Plains Trail Series

Paint Mines Trail

Trailhead Directions

From I-25 in Colorado Springs, exit at Bijou Street (right) and head east on Bijou Street to N. Nevada Street. At N. Nevada Street, turn north (left) and proceed one block to Platte Avenue. Turn east (right) onto Platte Avenue (US-24 BLE) and continue for 5.5 miles. Platte Avenue will become US-24 E here. Continue on US-24 E towards Calhan for 28.8 miles. In Calhan, turn south (right) onto Yoder Street for 0.2 miles. Yoder Street becomes N. Calhan Highway. Continue south on N. Calhan Highway for 0.3 miles to Paint Mine Road. Turn east (left) onto Paint Mine Road and travel for about 0.2 miles. The paved parking area (P1) will be on your left. There is also another paved parking area further east along Paint Mine Road at about 0.6 miles (P2) on your left.

[Click here for map to trailhead \(courtesy of MapQuest\)](#)

Waypoint Log

- P1 @ 0.00 Mi.** - Trailhead. Parking area along Paint Mine Road.
- 1 @ 0.08 Mi.** - Trail intersection, continue straight for loop trail. Turn right to go to Paint Mine Formations.
- 2 @ 0.43 Mi.** - Trail turns, interpretive sign here.
- 3 @ 1.08 Mi.** - Four way intersection. Head left to continue loop trail.
- 4 @ 1.25 Mi.** - Top of ridge overlooking Paint Mine Formations.
- 5 @ 2.33 Mi.** - Trail intersection. Second parking area P2 straight ahead. Go to the right.
P2 @ 0.11 Mi from WP 5 - Trailhead. Second parking area along Paint Mine Road.
- 6 @ 2.68 Mi.** - Crest of trail with great views of the Paint Mines Formations
- 7 @ 2.85 Mi.** - Trail intersection. Turn left to go to Paint Mines Formations. Turn right to go back to parking area (P1)
- P1 @ 3.47 Mi.** - Parking area.

Other Trails Accessible from this Trail ([Click on Trail Name below to Access Trail Guide](#))

- [None](#)