



## Mesa Valley Trail



The **Mesa Valley Trail** is a gently rolling trail that starts at Sondermann Park and connects to the Palmer Mesa Trail at its end. It has good views of Pikes Peak and there are numerous short nature trails to explore in Sondermann Park after your hike.

[Click here to view photos of this trail](#)  
(Password = havefun)

<b>Use of Trail:</b>	Hiking / Biking / Horse Riding
<b>Length of Trail:</b>	2.64 Miles Roundtrip
<b>Elevation Gain:</b>	7,076 Ft. to 9,226 Ft. / 2,150 Ft Gain
<b>Hiking Difficulty:</b>	Easy ( <a href="#">see ratings here</a> )
<b>Fees / Permits:</b>	None
<b>Trail Contact:</b>	Colorado Springs Dept. of Parks & Recreation, 1401 Recreation Way, Colorado Springs, CO. 80905 (719) 385-5940
<b>Approx. Hiking Time:</b>	1.5 Hours Roundtrip
<b>Terrain Type:</b>	Open / Hilly
<b>Trail Characteristics:</b>	Double Track – Dirt / Gravel
<b>Views:</b>	Pikes Peak
<b>Pets:</b>	Permitted on Leash Only
<b>Other Nearby Trails:</b>	Palmer Mesa
<b>Geocaches / Letterboxes:</b>	Yes

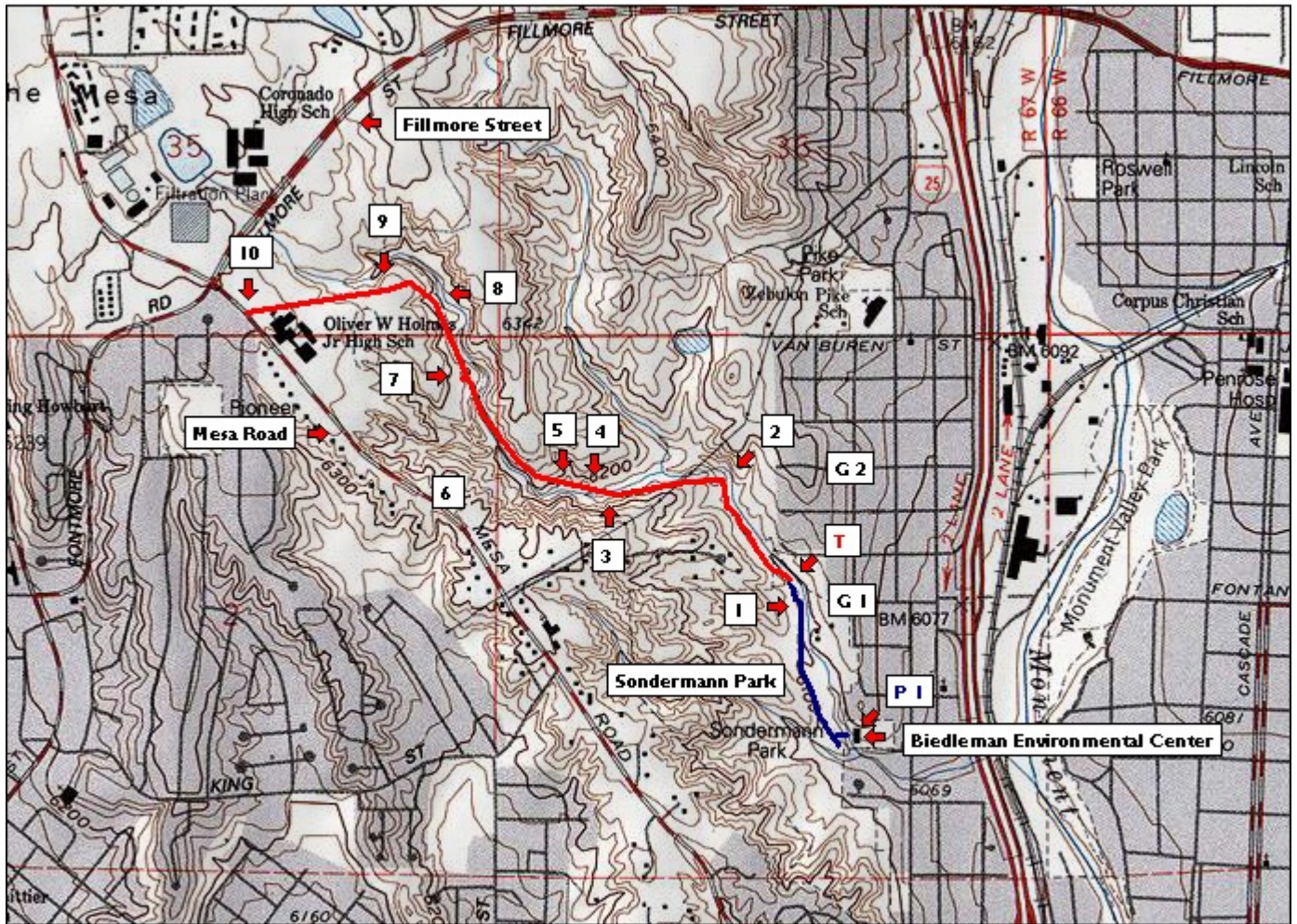
**GPS Waypoint Files** are also available for this trail. This file includes the GPS waypoints for each trail feature listed and can be accessed and downloaded directly to your GPS unit.

[Click here for the instructions on how to download the GPS waypoint file.](#)

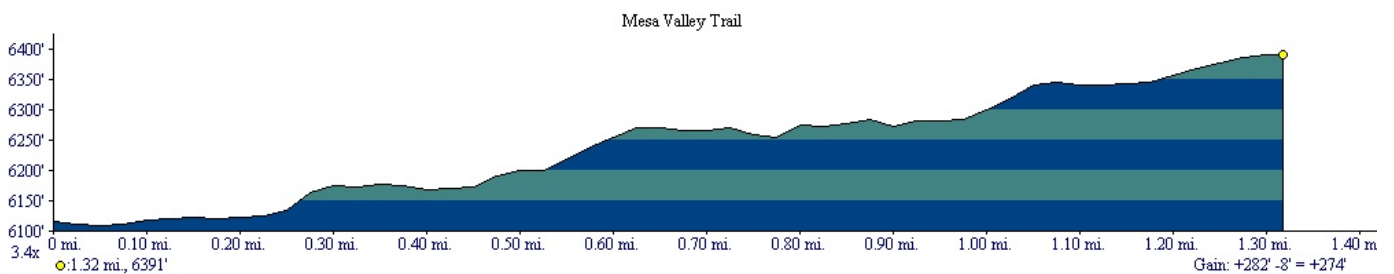
[Click here to download the GPS waypoint file for this trail.](#)

Colorado Springs Urban Trail Series  
 Mesa Valley Trail

Mesa Valley Trail



Map created with TOPO!® ©2003 National Geographic (www.nationalgeographic.com/topo)



Profile created with TOPO!® ©2003 National Geographic (www.nationalgeographic.com/topo)

