



Mesa Springs Greenway Trail



The **Mesa Springs Greenway Trail** is a mostly level, wide paved trail that travels along the greenway space adjacent to I-25, from Bijou Street to Fillmore Avenue. It is a great urban trail for families looking for a leisurely bike ride.

[Click here](#)
to view photos of this trail
(Password = havefun)

Use of Trail:	Hiking / Biking
Length of Trail:	5.54 Miles Roundtrip
Elevation Gain:	5,960 Ft. to 6,140 Ft. / 180 Ft Gain
Hiking Difficulty:	Easy (see ratings here)
Fees / Permits:	None
Trail Contact:	Colorado Springs Dept. of Parks & Recreation, 1401 Recreation Way, Colorado Springs, CO. 80905 (719) 385-5940
Approx. Hiking Time:	2 Hours Roundtrip
Terrain Type:	Flat / Urban Greenway
Trail Characteristics:	Wide Concrete Pavement
Views:	Pikes Peak
Pets:	Permitted on Leash Only
Other Nearby Trails:	Mesa Valley Trail/ Palmer Mesa Trail
Geocaches / Letterboxes:	No

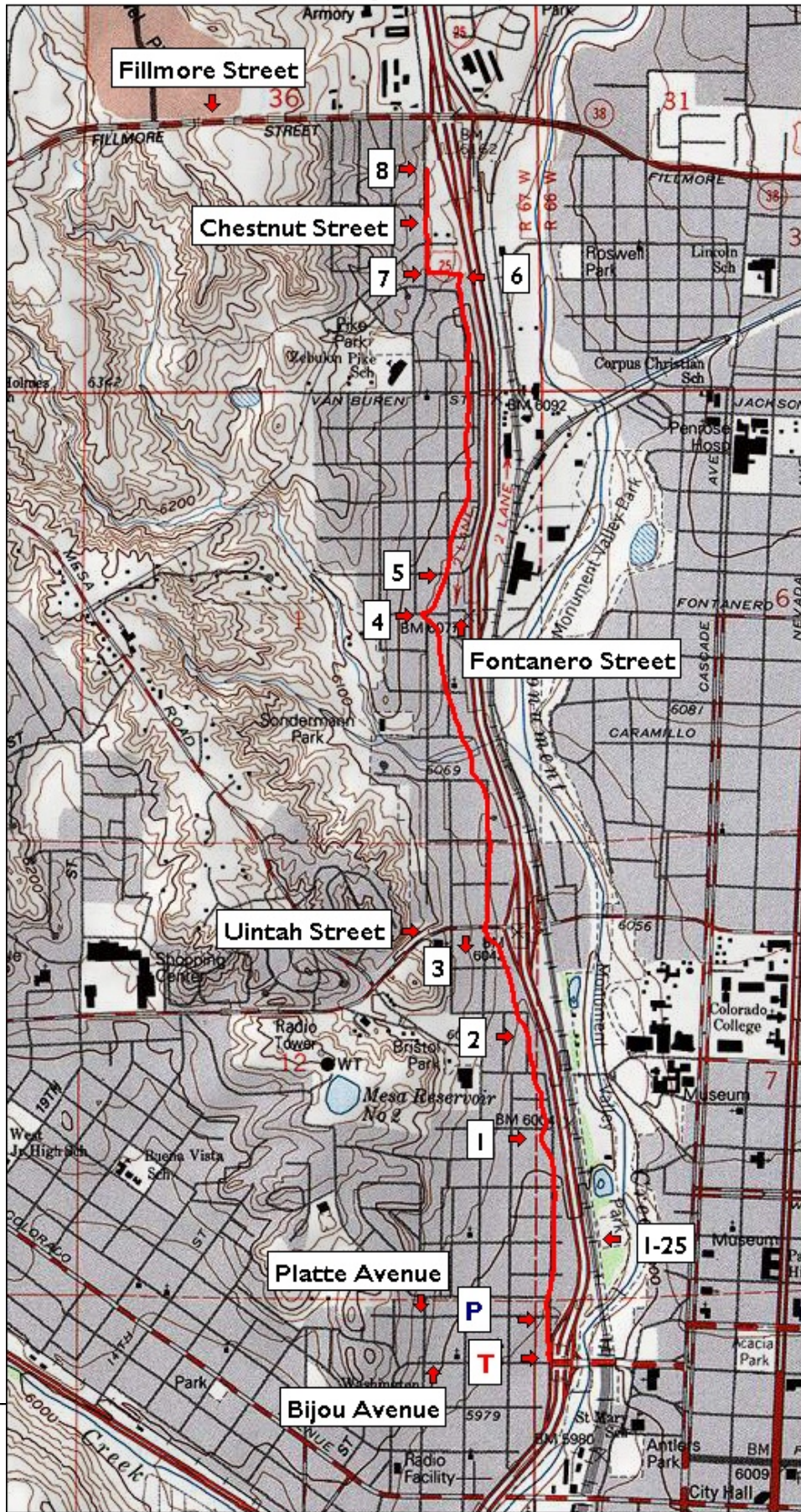
GPS Waypoint Files are also available for this trail. This file includes the GPS waypoints for each trail feature listed and can be accessed and downloaded directly to your GPS unit.

[Click here for the instructions on how to download the GPS waypoint file.](#)

[Click here to download the GPS waypoint file for this trail.](#)

Colorado Springs Urban Trail Series
Mesa Springs Greenway Trail

Mesa Springs Greenway Trail

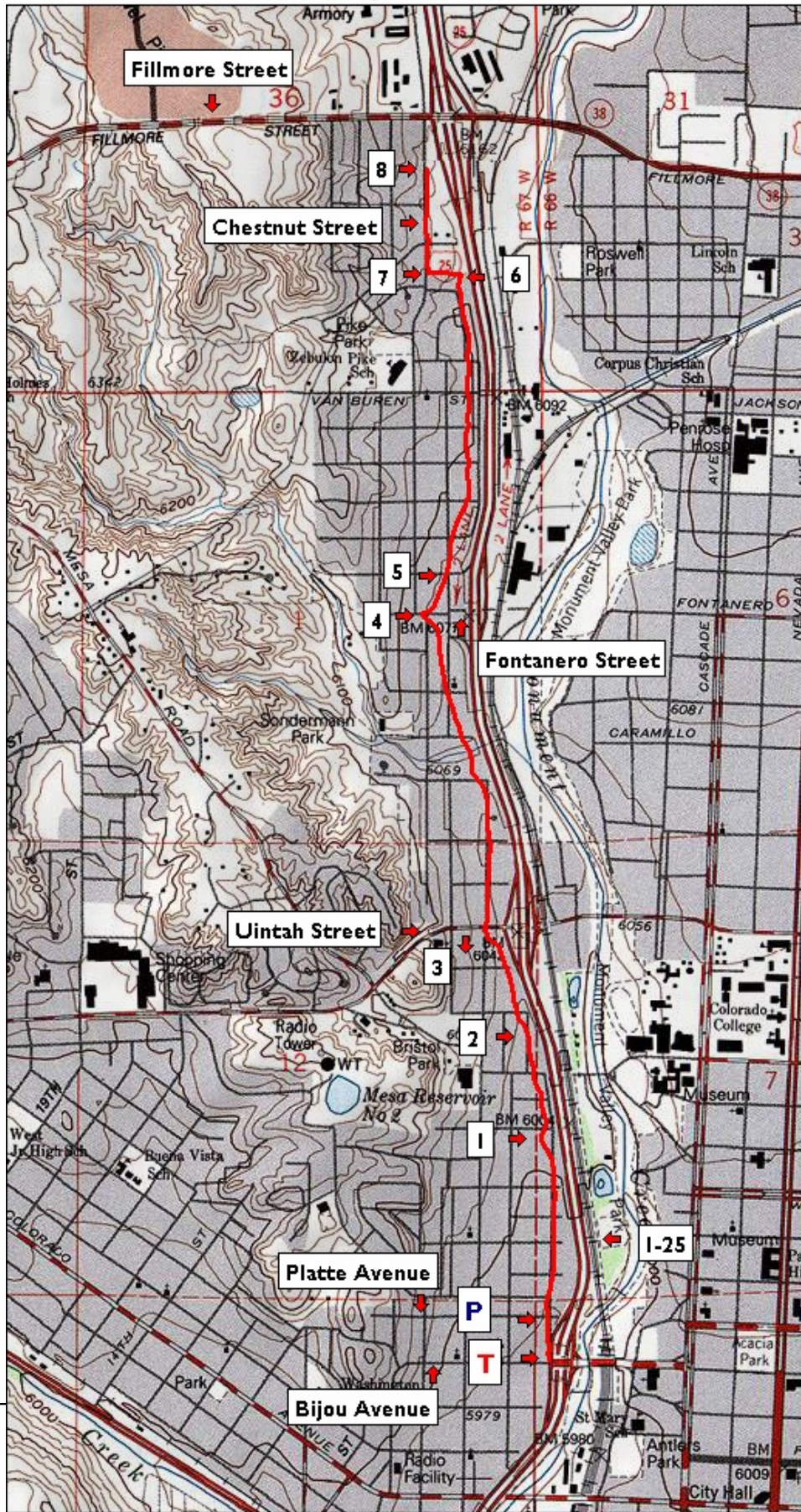


TN MN
9 1/2°

0 5 1 MILE
0 1000 FEET 0 500 1000 METERS

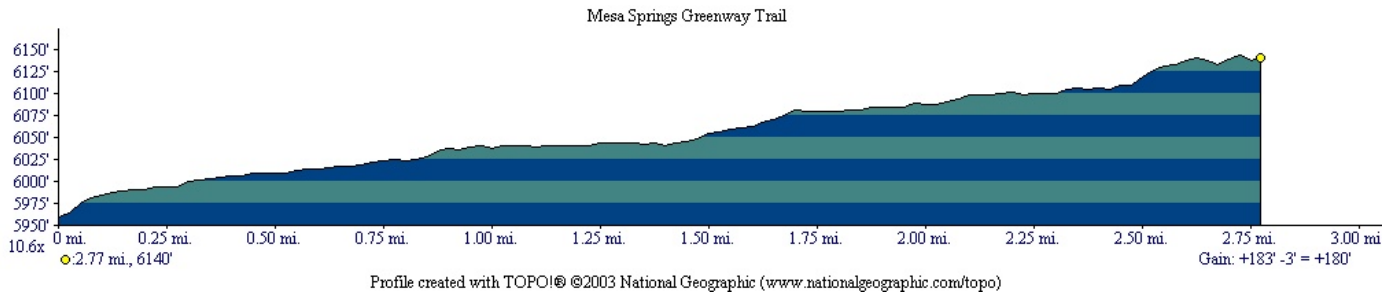
Colorado Springs Urban Trail Series
Mesa Springs Greenway Trail

Mesa Springs Greenway Trail



Colorado Springs Urban Trail Series

Mesa Springs Greenway Trail



Trailhead Directions

From the I-25 in Colorado Springs, exit at Bijou Street (Exit 142), head west (toward the mountains) for one block to Walnut Street. Turn right onto Walnut Street and travel for one block to Platte Avenue. Turn right onto Platte Avenue and travel to the end of the street at the cul-de-sac. Park along the street in the cul-de-sac, adjacent to the hotel. The trail begins several hundred feet to the south at Bijou Street and parallels along the sound wall which is between the trail and I-25 for most of the trail..

[Click here for map to trailhead \(courtesy of MapQuest\)](#)

Waypoint Log

- T @ 0.00 Mi.** - Trailhead at Bijou Street
- P @ 1.32 Mi.** - On-street parking at the cul-de-sac at the end of Platte Avenue
- 1 @ 0.00 Mi.** - Pedestrian walkway going over I-25 to Monument Valley Park
- 2 @ 0.09 Mi.** - Pine Street ends here at cul-de-sac
- 3 @ 0.17 Mi.** - Cross over Unitah Street
- 4 @ 0.27 Mi.** - Cross over Fontanero Street – Trail jogs after crossing street
- 5 @ 0.30 Mi.** - Trail leaves Walnut Street
- 6 @ 0.33 Mi.** - Trail turns to the left behind the sound wall going behind the American Furniture Store
- 7 @ 0.79 Mi.** - Turn right onto sidewalk along Chestnut Street
- 8 @ 1.00 Mi.** - Trail ends several hundred feet before Fillmore Street

Other Trails Accessible from this Trail [\(Click on Trail Name Below to Access Trail Guide\)](#)

- [None](#)