



## Blue Stem Prairie Open Space Trail



The **Blue Stem Prairie Open Space Trail** is a very flat walk/ride around the Big Johnson Reservoir. With great views of Pikes Peak and its varied wildlife this trail is becoming a favorite of families and bird lovers alike. Remember that there is no reservoir access, as the reservoir itself is privately owned.

[Click here to view photos of this trail](#)  
(Password = havefun)

<b>Use of Trail:</b>	Hiking / Bicycles
<b>Length of Trail:</b>	4.04 Miles Roundtrip
<b>Elevation Gain:</b>	5,835 Ft. to 5,8526 Ft. / 17 Ft Gain
<b>Hiking Difficulty:</b>	Easy ( <a href="#">see ratings here</a> )
<b>Fees / Permits:</b>	None
<b>Trail Contact:</b>	Colorado Springs Dept. of Parks & Rec. 1401 Recreation Way Colorado Springs, CO. 80905 (719)385-5940
<b>Approx. Hiking Time:</b>	1.5 Hours Roundtrip
<b>Terrain Type:</b>	Flat / Prairie
<b>Trail Characteristics:</b>	Double Track – Dirt / Gravel
<b>Views:</b>	Prairie / Eastern Plains / Pikes Peak
<b>Pets:</b>	Not Permitted
<b>Other Nearby Trails:</b>	None
<b>Geocaches / Letterboxes:</b>	Yes

**GPS Waypoint Files** are also available for this trail. This file includes the GPS waypoints for each trail feature listed and can be accessed and downloaded directly to your GPS unit.

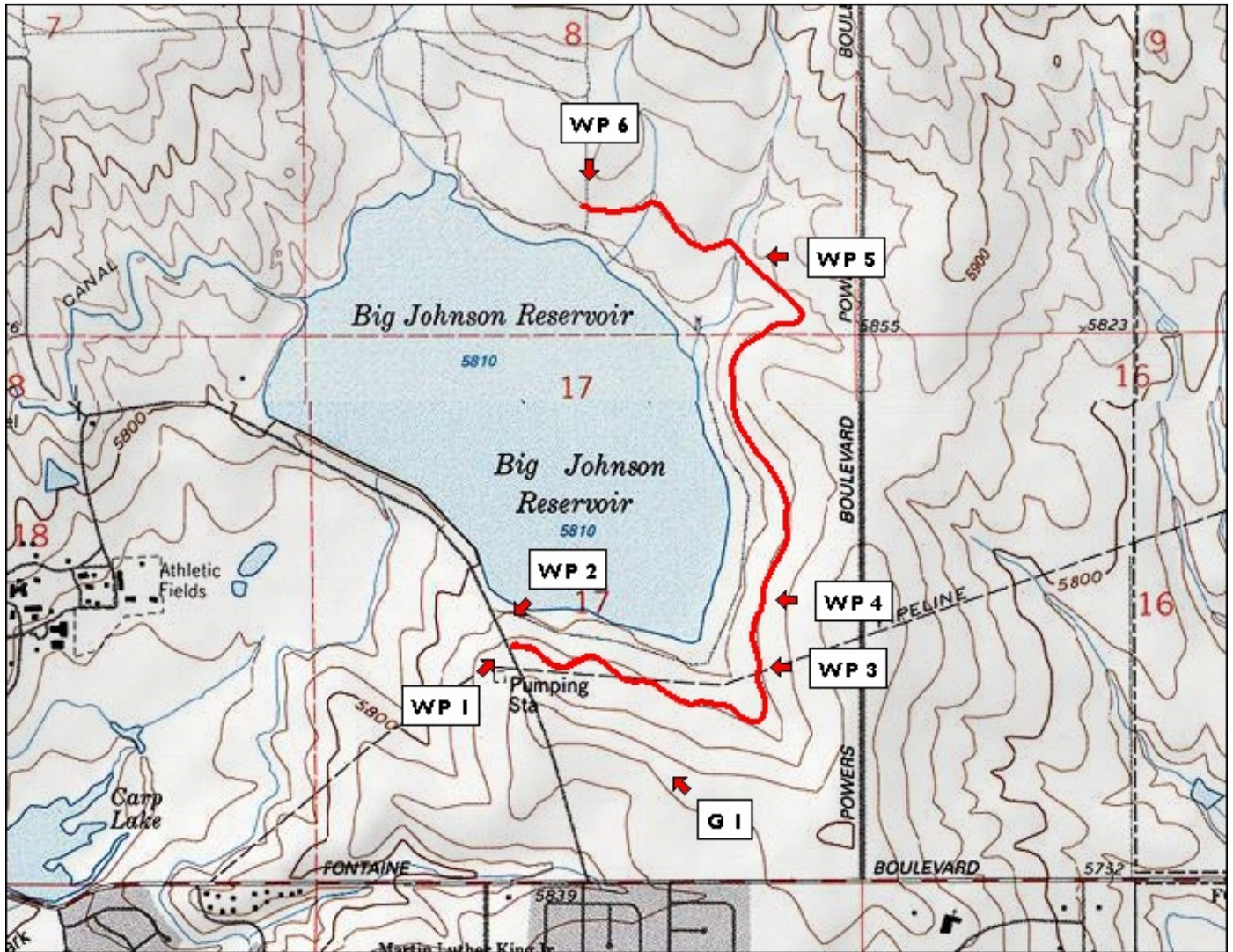
[Click here for the instructions on how to download the GPS waypoint file.](#)

[Click here to download the GPS waypoint file for this trail.](#)

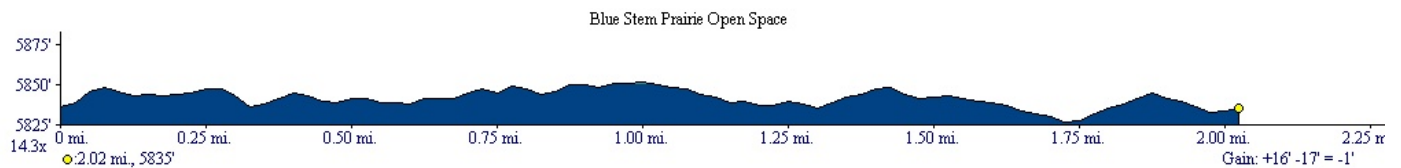


Blue Stem Prairie  
Open Space Trail

Blue Stem Prairie Open Space



Map created with TOPO!© ©2003 National Geographic (www.nationalgeographic.com/topo)



# Colorado Springs Urban Trail Series

## Blue Stem Prairie Open Space Trail

### Trailhead Directions

- From the I-25 in Colorado Springs, exit at South Academy (Exit 135). Go north (east) on South Academy Blvd. and get off at the Bradley Road exit, in 1.15 miles. Turn right onto Bradley Road and go 3.5 miles to its end. At the 3-way intersection of Bradley Road, Valley School Road and Goldfield Drive, turn right onto Goldfield Drive. The Big Johnson Reservoir will be on your left. Travel for .95 miles on Goldfield Drive. Soon after you pass the Big Johnson Reservoir, you will see the parking area for the Blue Stem Prairie Open Space on your left.

[Click here for map to trailhead \(courtesy of MapQuest\)](#)

### Waypoint Log

- WP 1 @ 0.00 Mi.** - Trailhead at the Blue Stem Prairie Open Space parking lot. Frequent signs along the trail remind visitors that there is no access to the reservoir (the reservoir is privately owned). Stay on the trail.
- WP 2 @ 0.05 Mi.** - Drainage Ditch
- WP 3 @ 0.77 Mi.** - Drainage Ditch
- WP 4 @ 0.89 Mi.** - Drainage Ditch. Trail passes through a prairie dog town on both sides of the trail.
- WP 5 @ 1.67 Mi.** - Drainage Ditch
- WP 6 @ 2.02 Mi.** - End of Trail marked by a barbed wire fence.

### Geocaches

- **G1 Geocache Name:** Bluestem Prairie Dog Cache      **Location:** N 38 / 44.419 & W 104 / 41.348

Check out [www.geocaching.com](http://www.geocaching.com) for more information